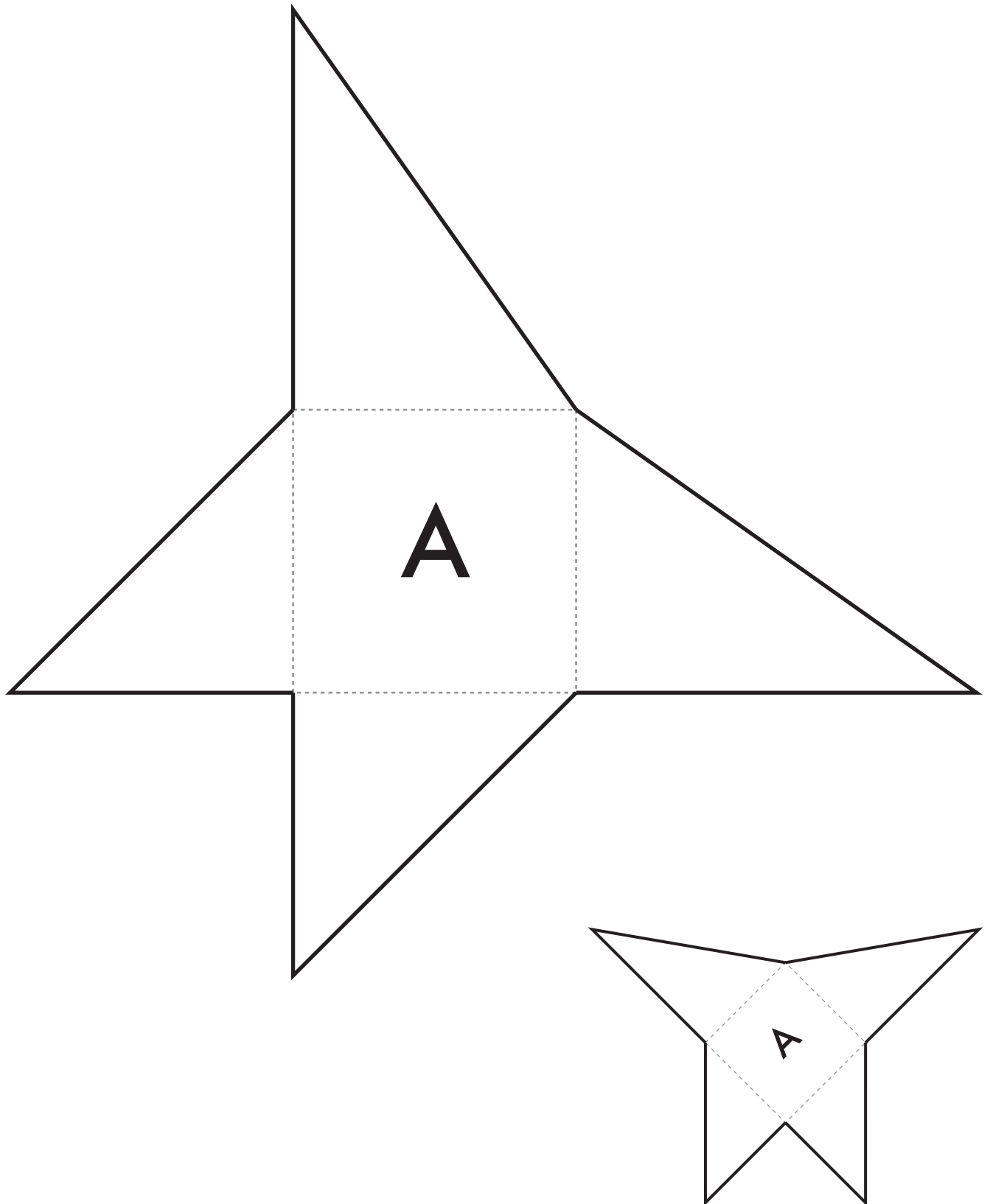
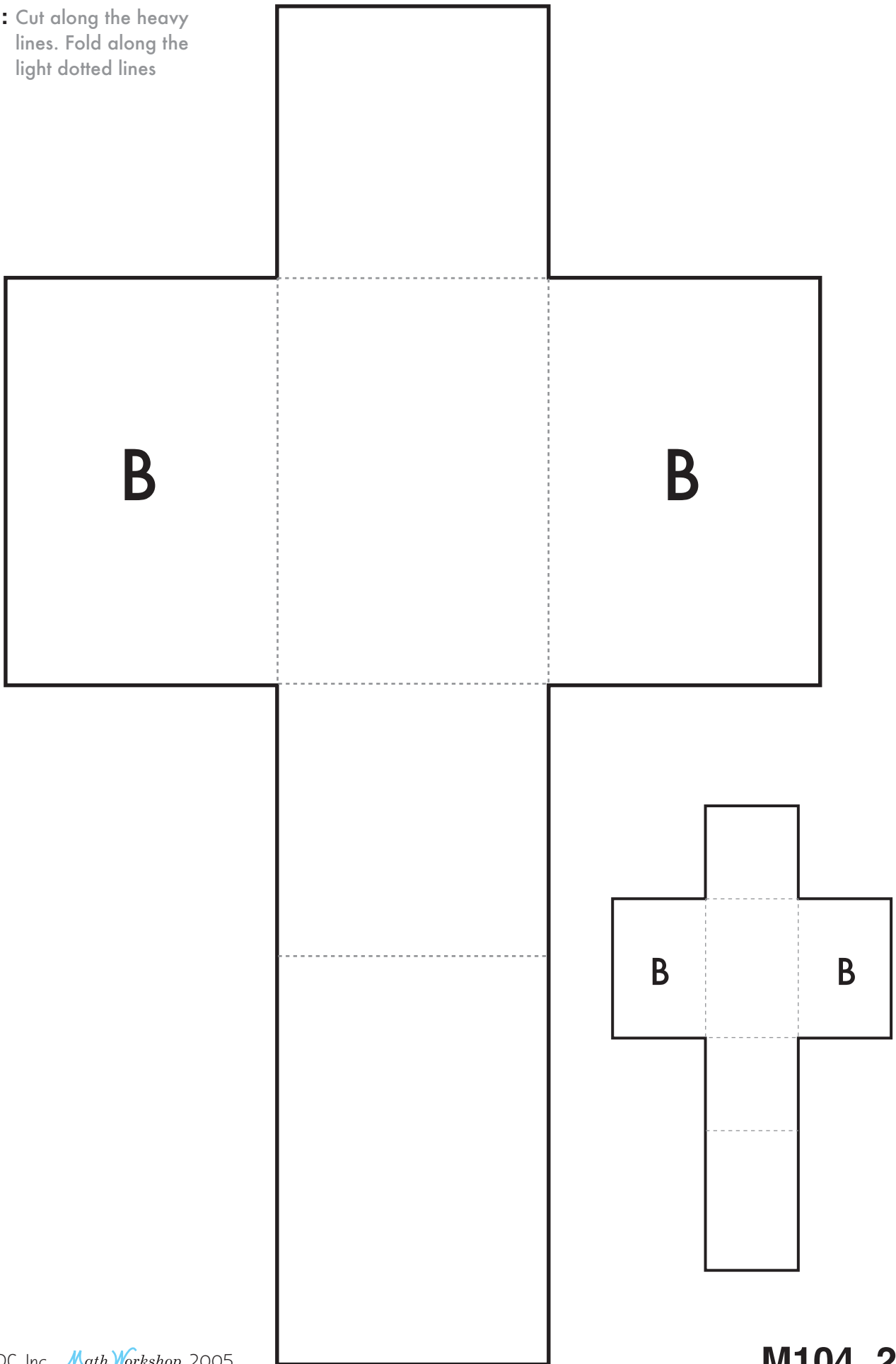


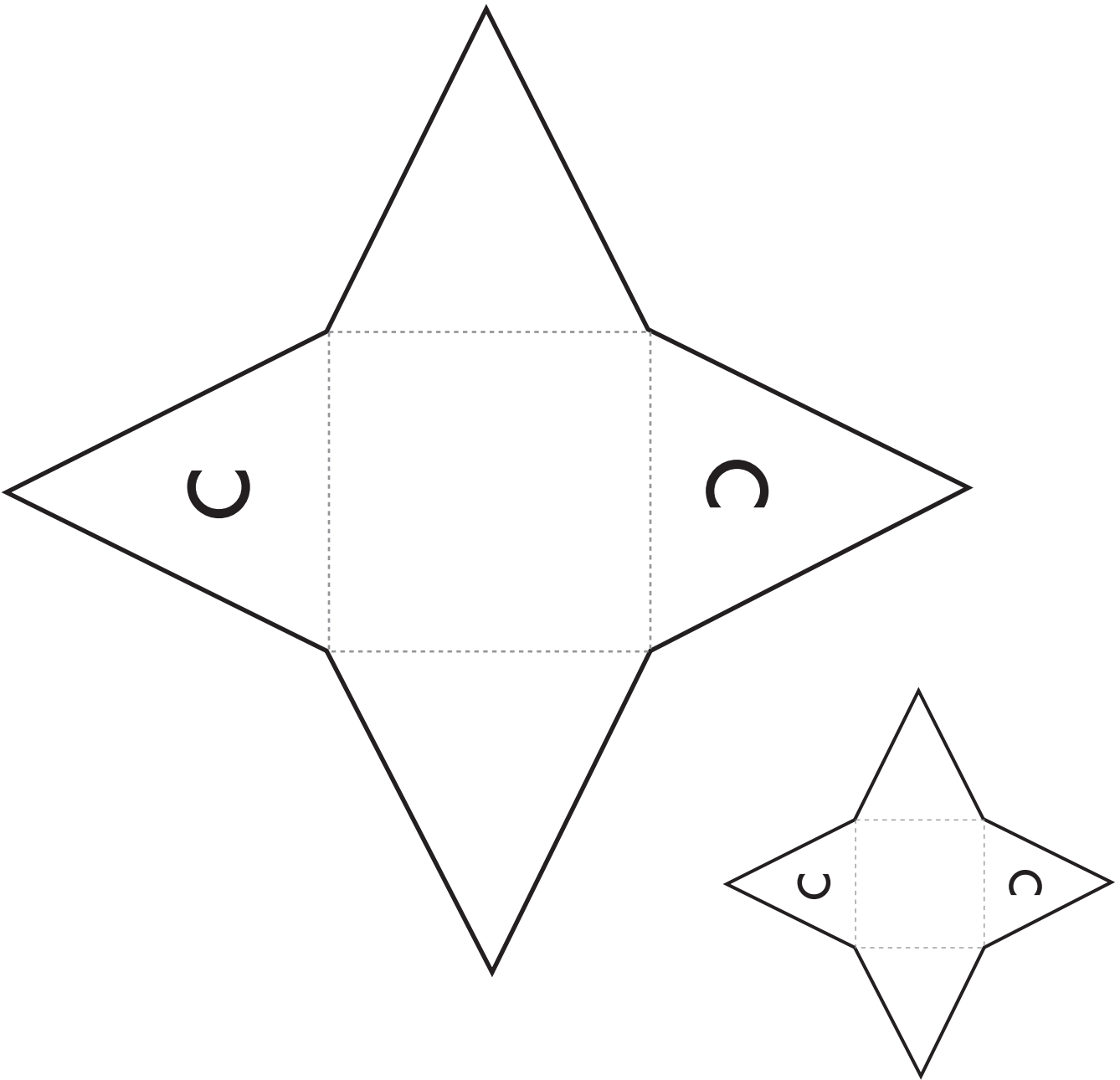
NET A: Cut along the heavy lines. Fold along the light dotted lines.



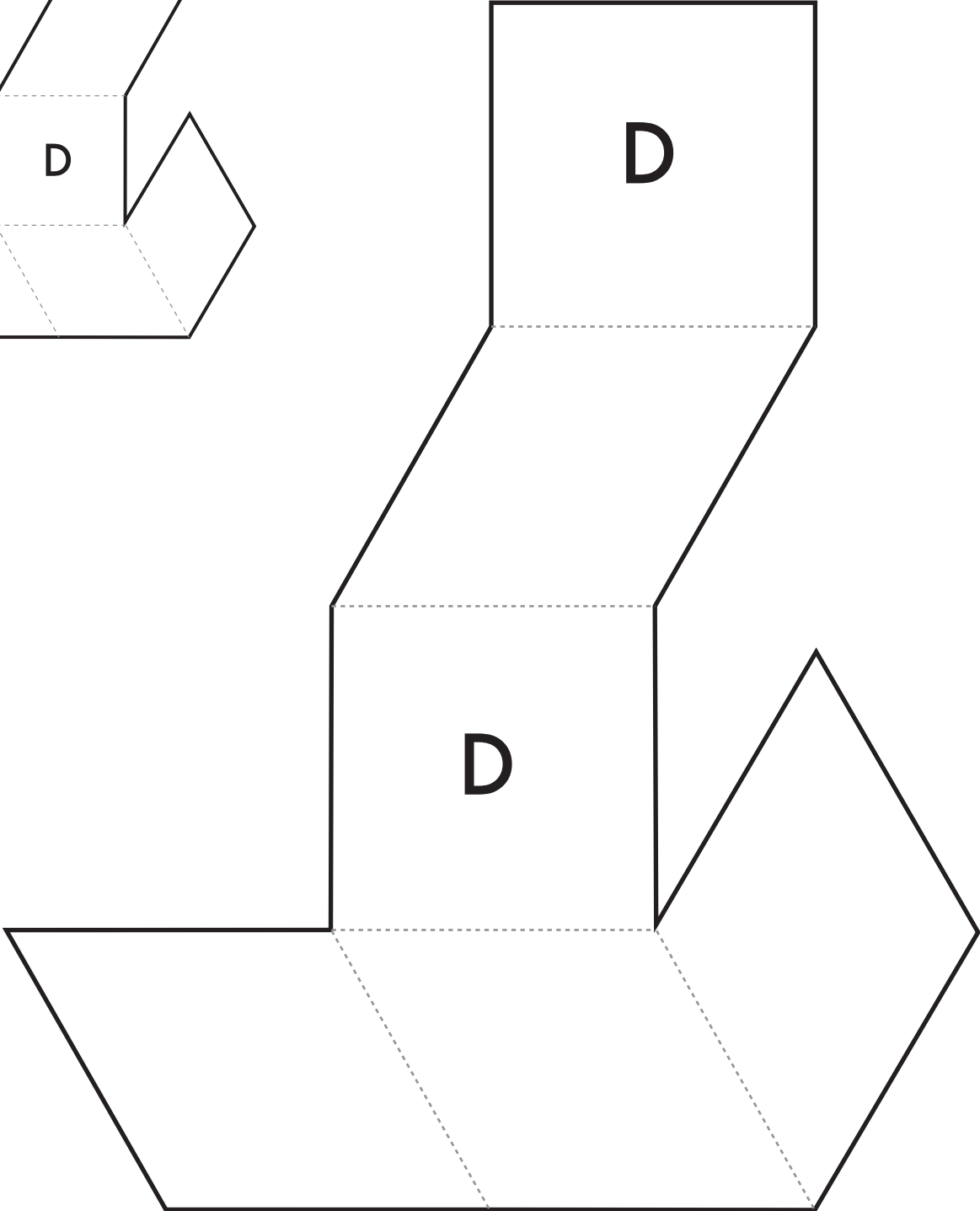
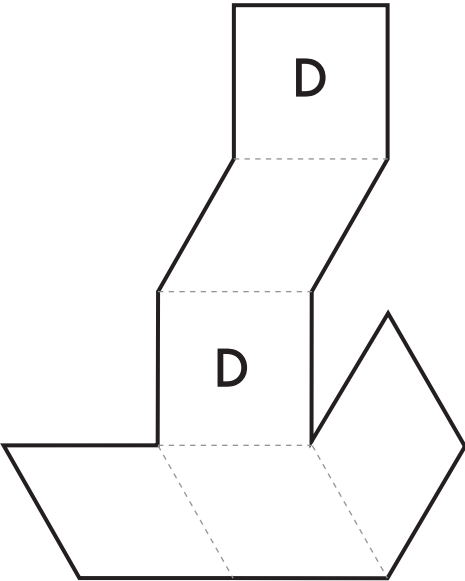
NET B: Cut along the heavy lines. Fold along the light dotted lines



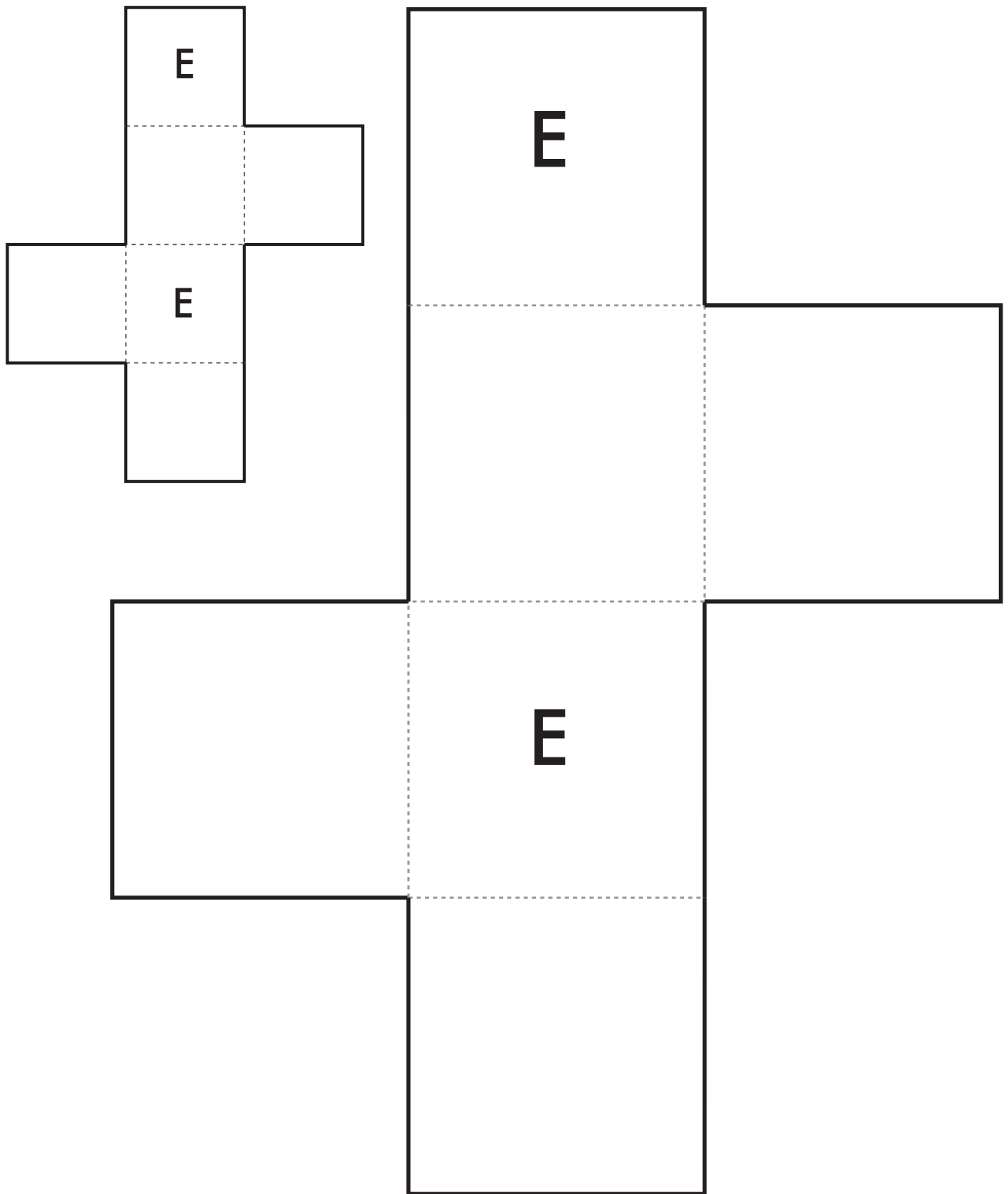
NET C: Cut along the heavy lines. Fold along the light dotted lines.



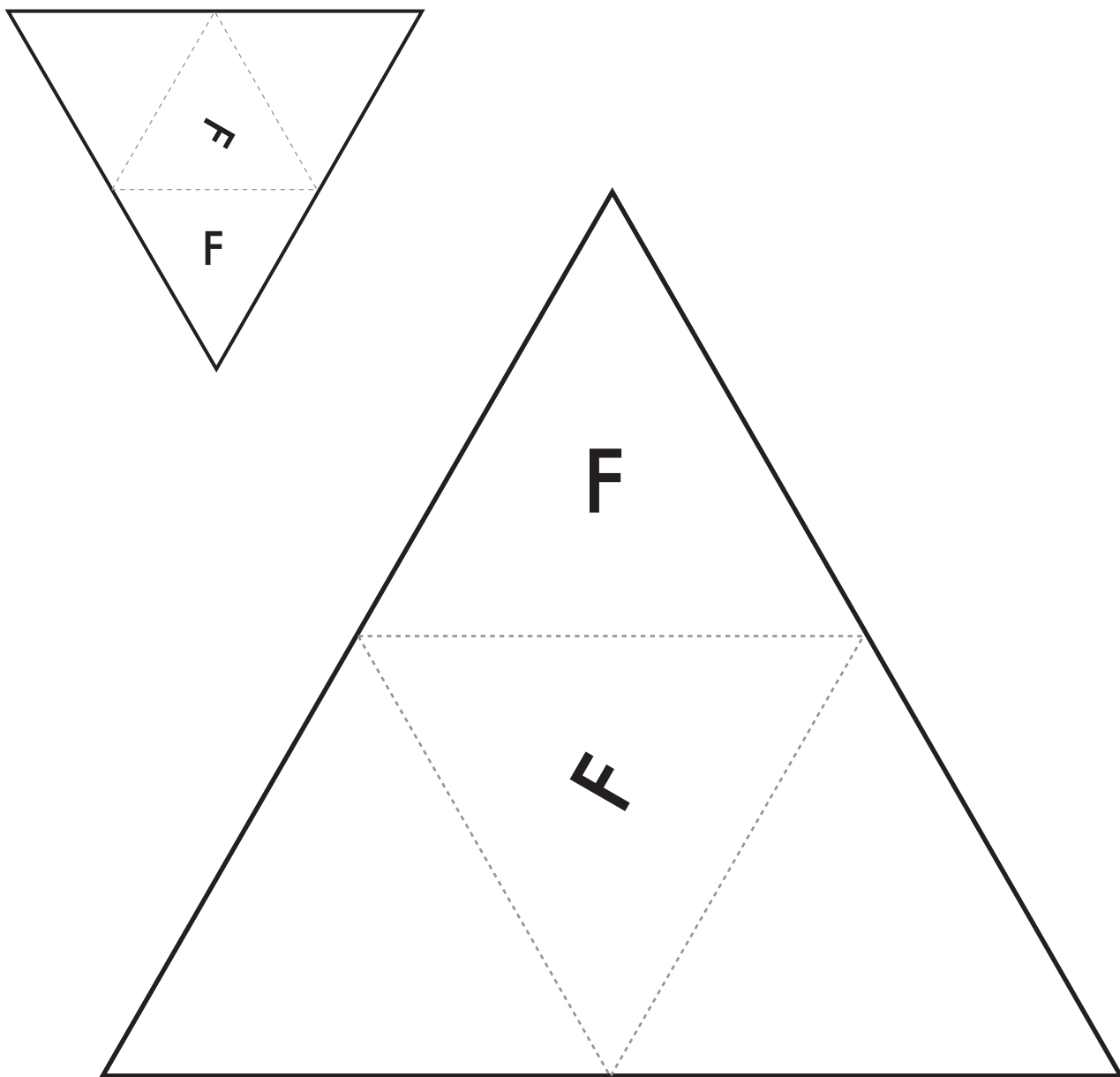
NET D: Cut along the heavy lines. Fold along the light dotted lines.



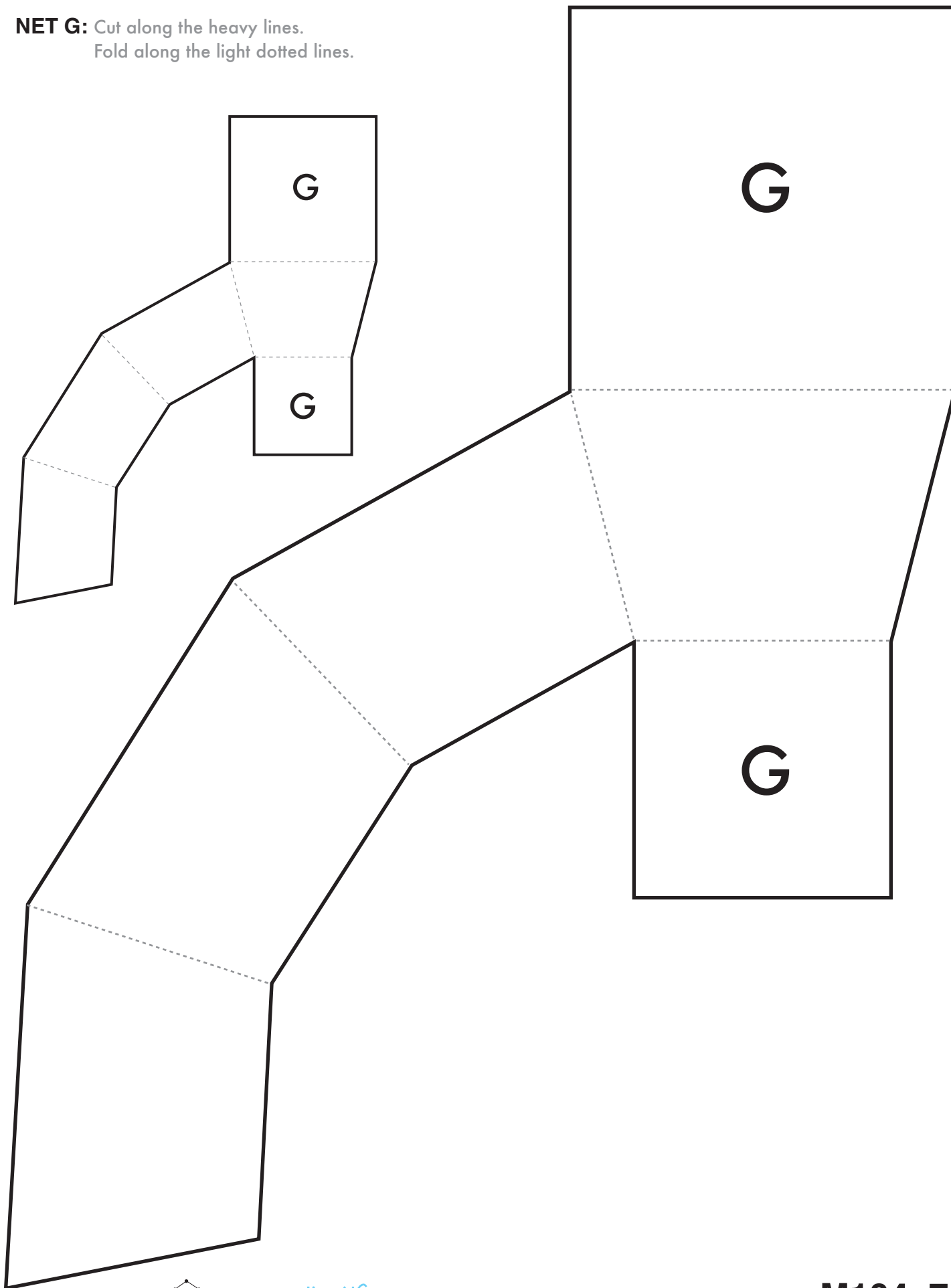
NET E: Cut along the heavy lines. Fold along the light dotted lines.



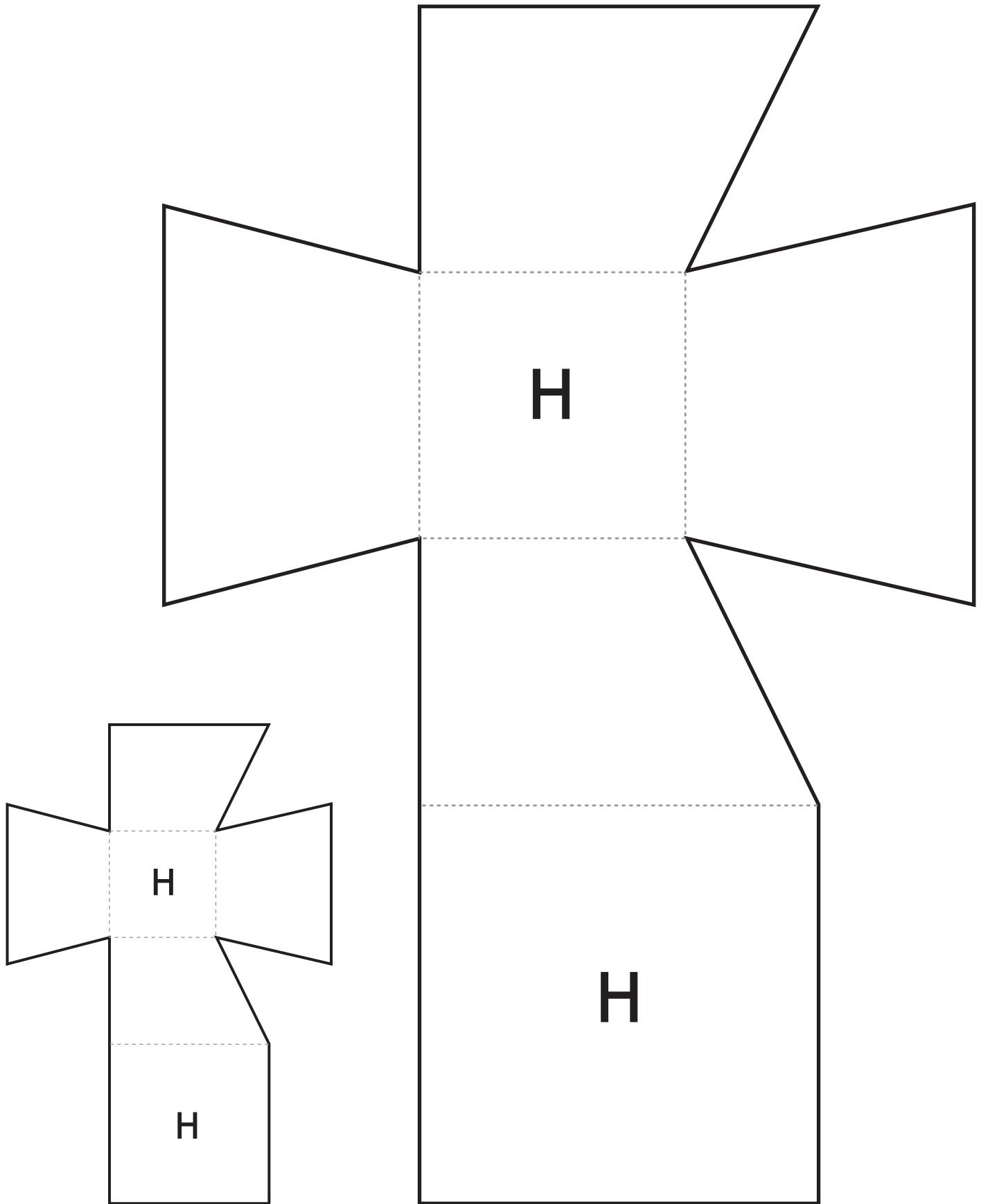
NET F: Cut along the heavy lines. Fold along the light dotted lines.



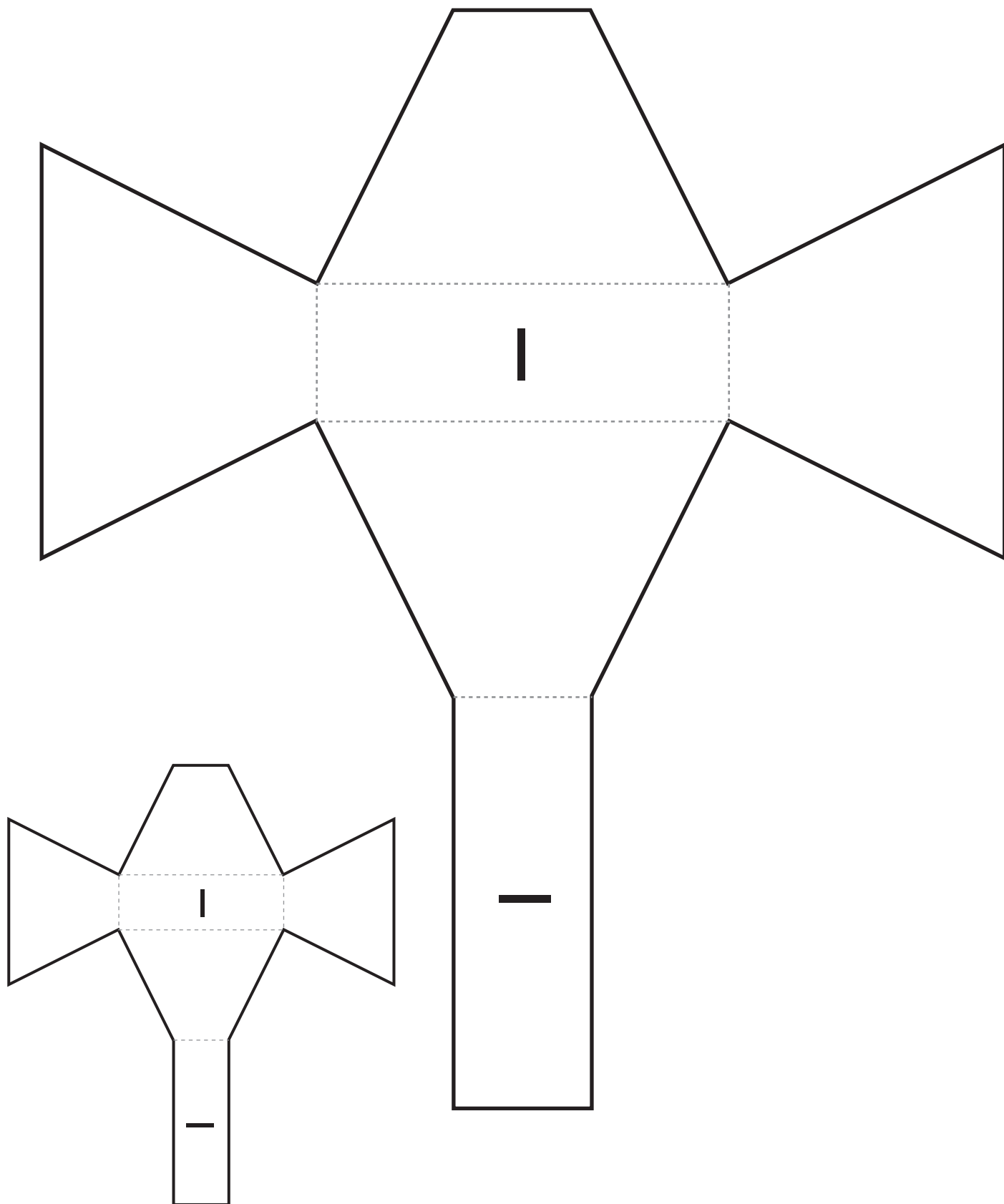
NET G: Cut along the heavy lines.
Fold along the light dotted lines.



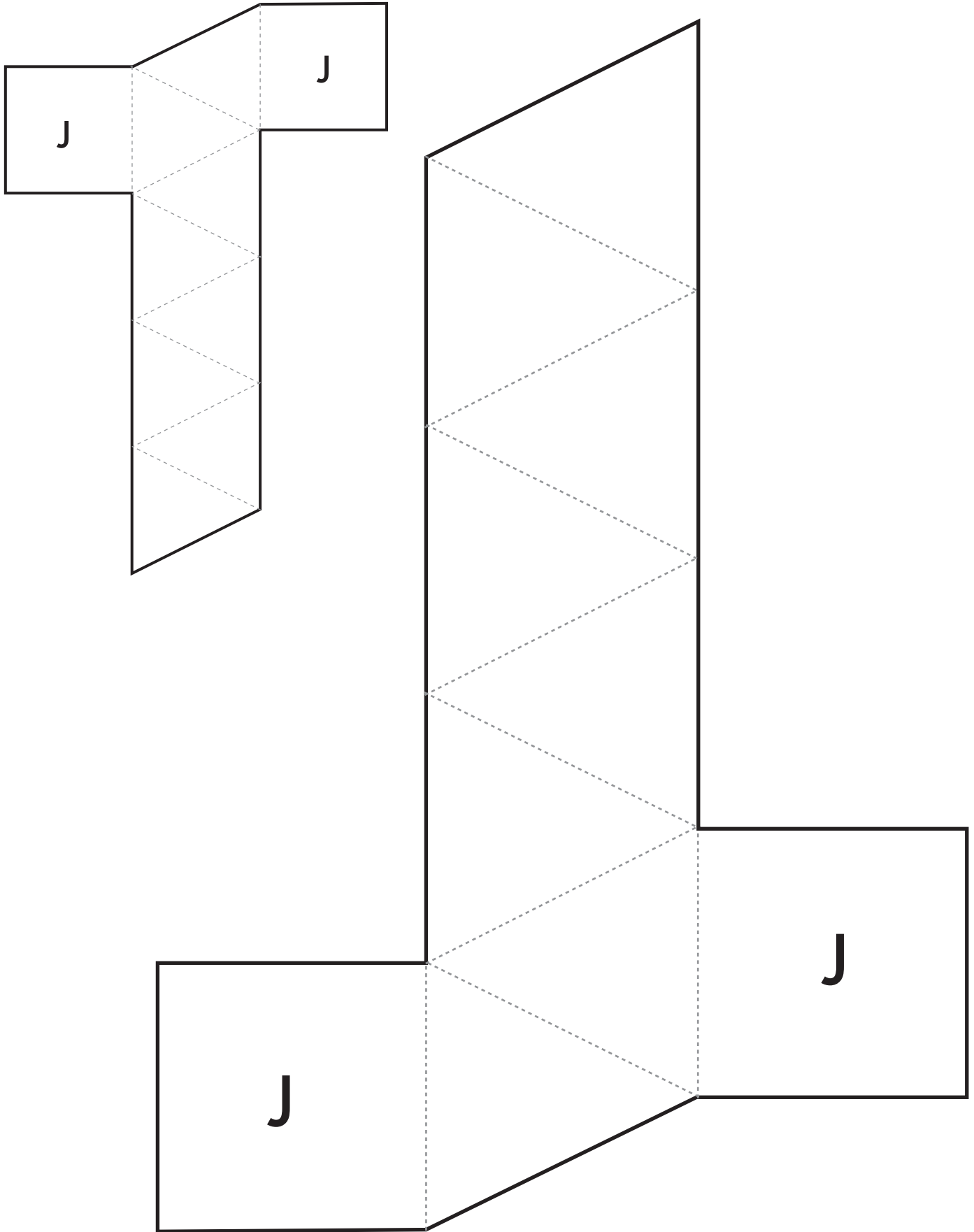
NET H: Cut along the heavy lines. Fold along the light dotted lines.



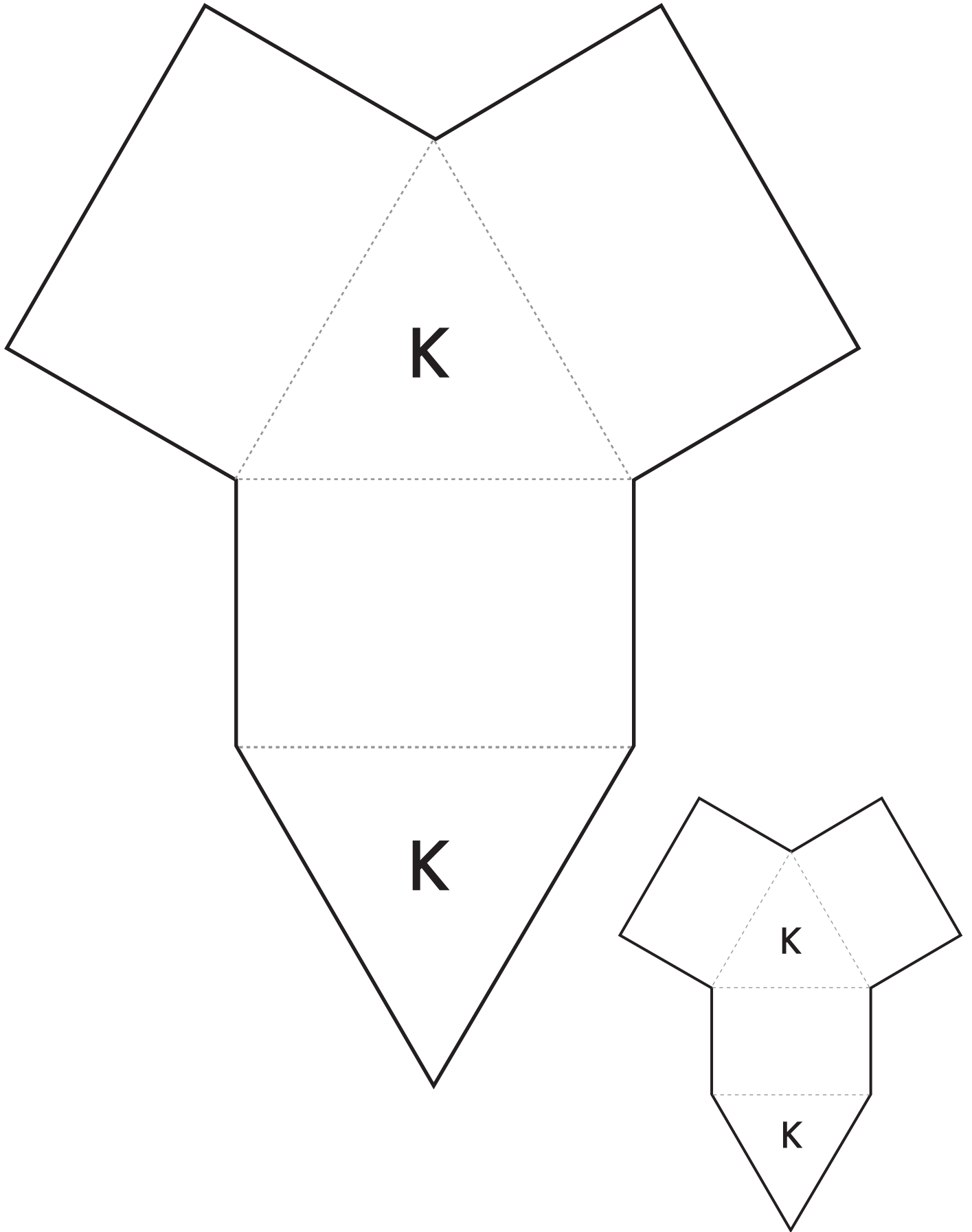
NET I: Cut along the heavy lines. Fold along the light dotted lines.



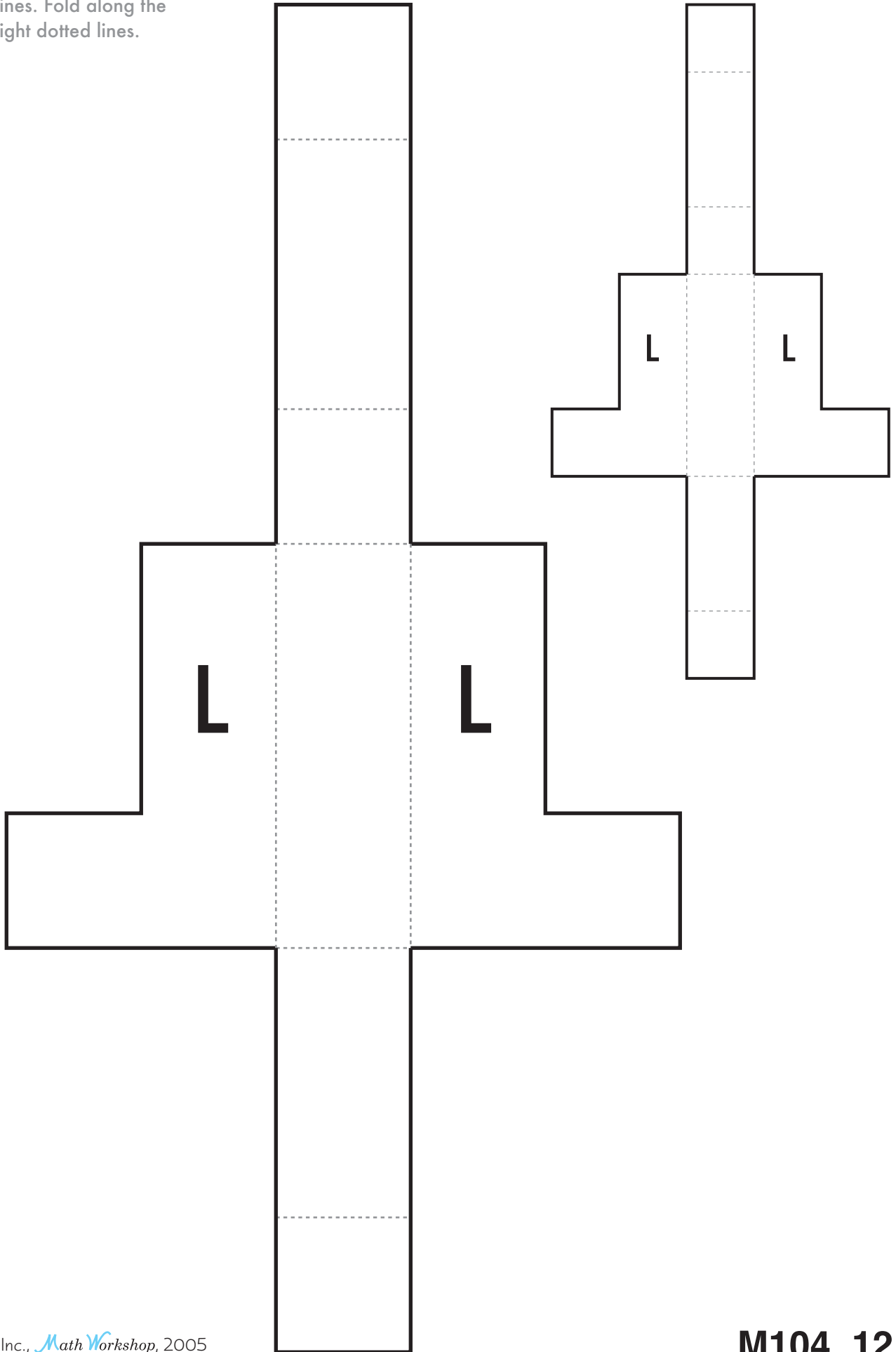
NET J: Cut along the heavy lines. Fold along the light dotted lines.



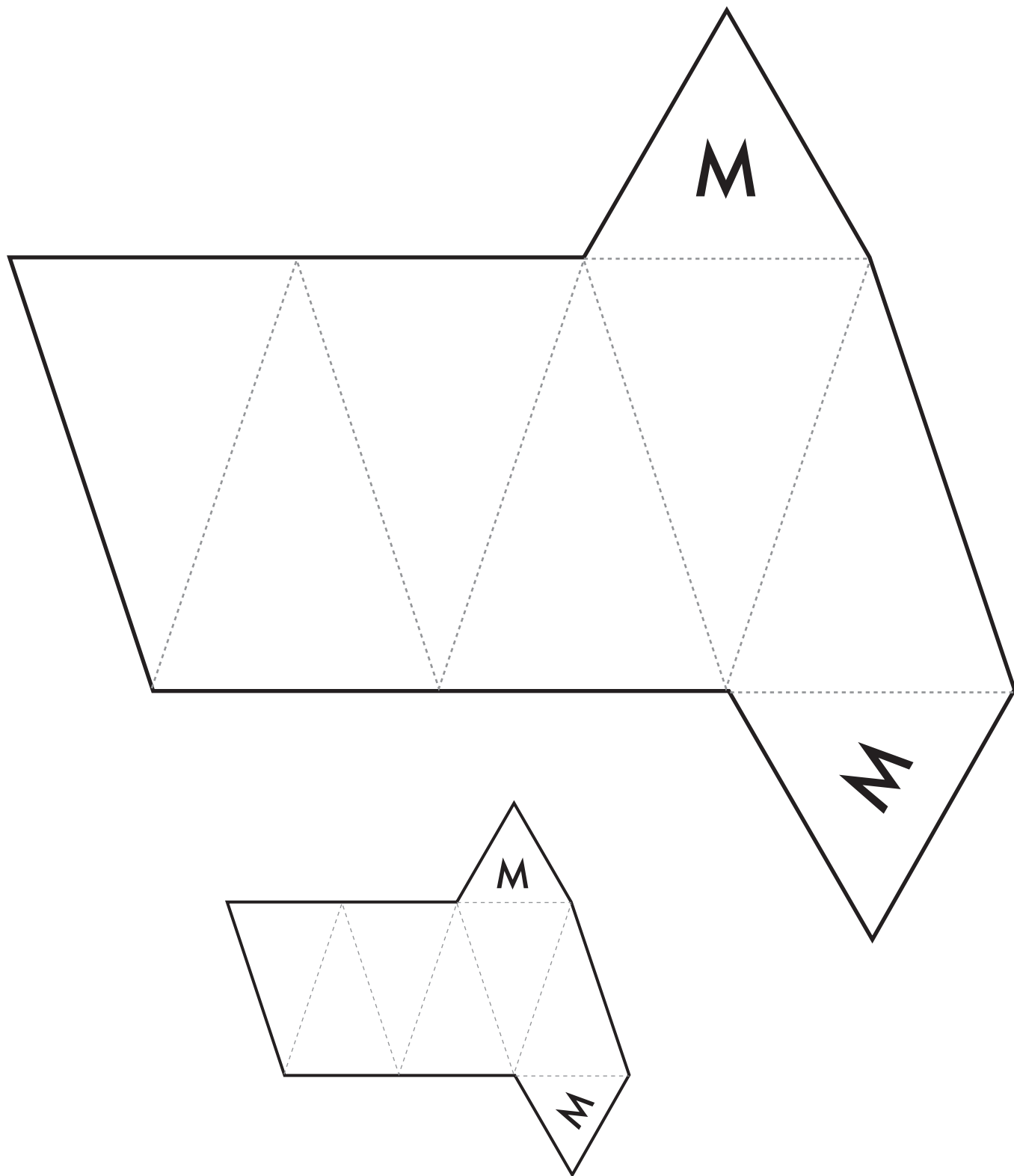
NET K: Cut along the heavy lines. Fold along the light dotted lines.



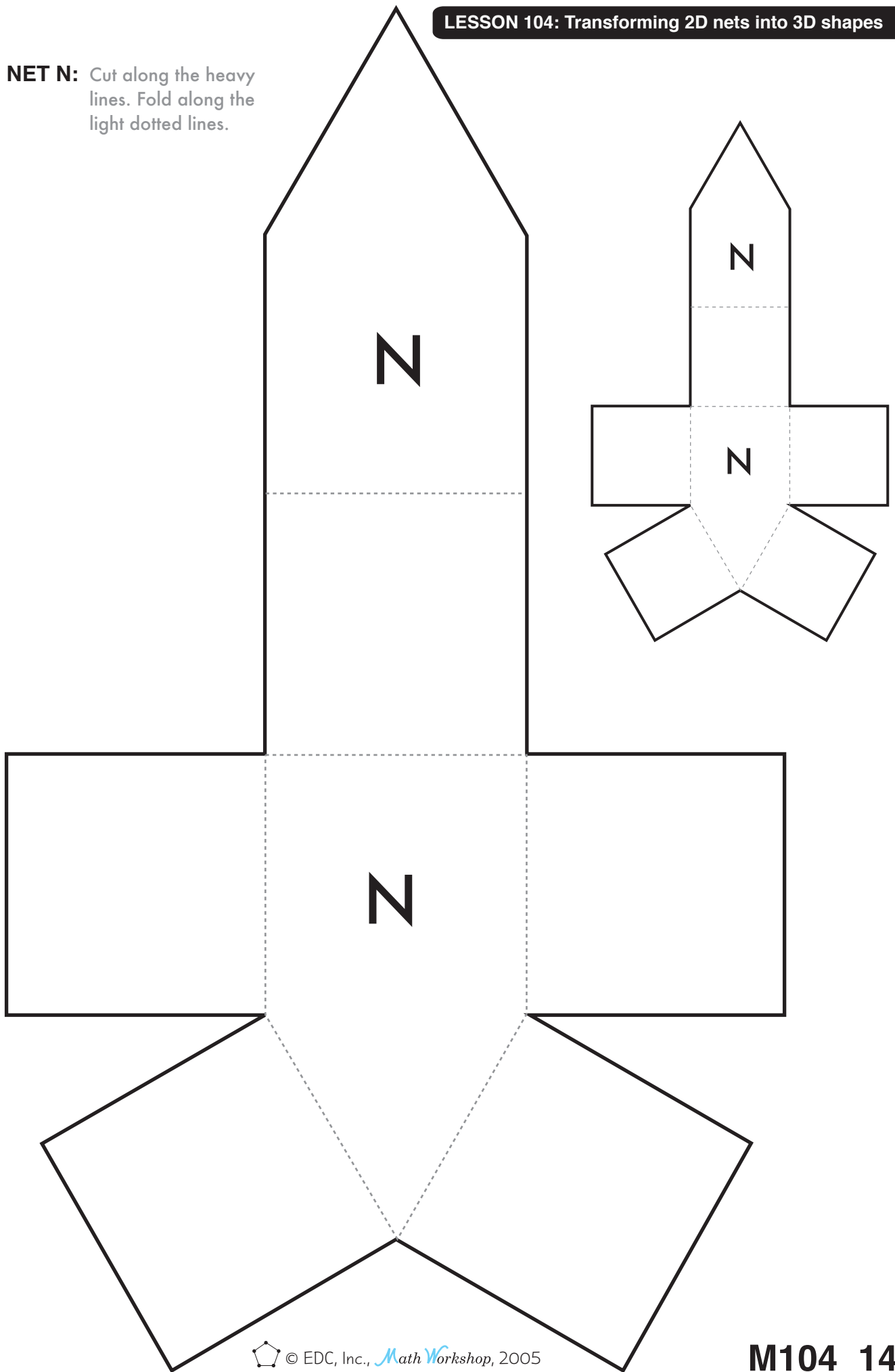
NET L: Cut along the heavy lines. Fold along the light dotted lines.



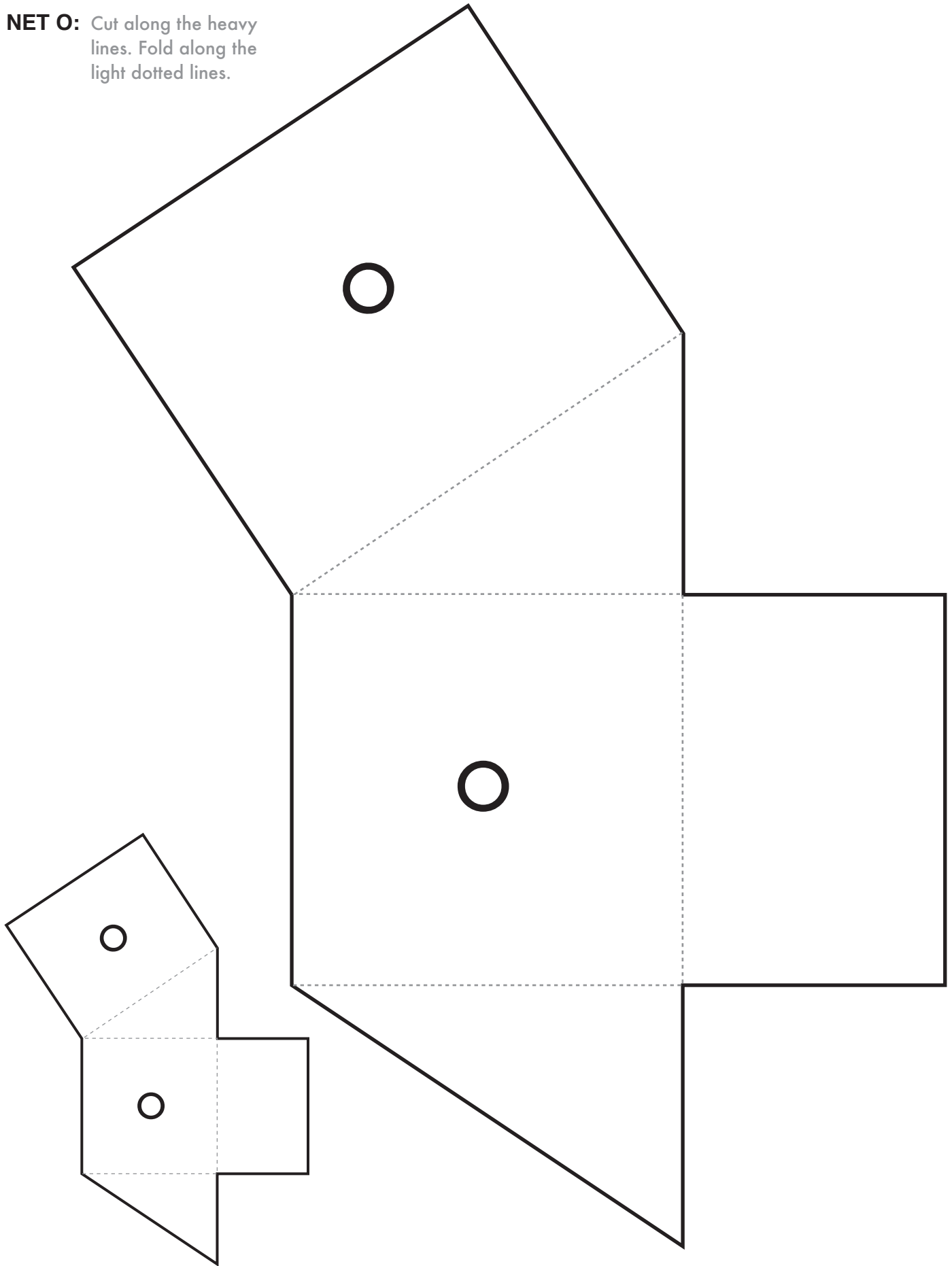
NET M: Cut along the heavy lines. Fold along the light dotted lines.



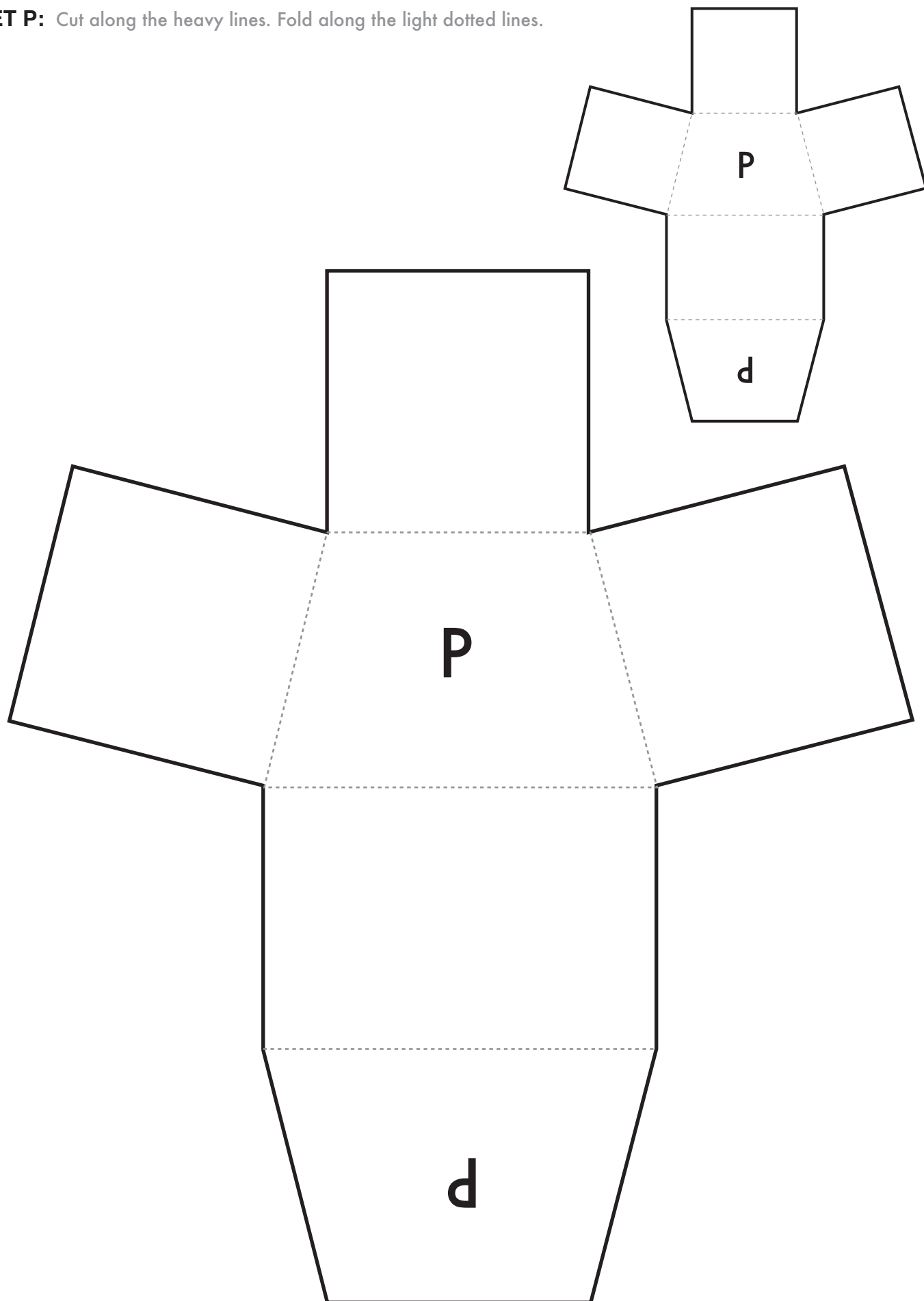
NET N: Cut along the heavy lines. Fold along the light dotted lines.



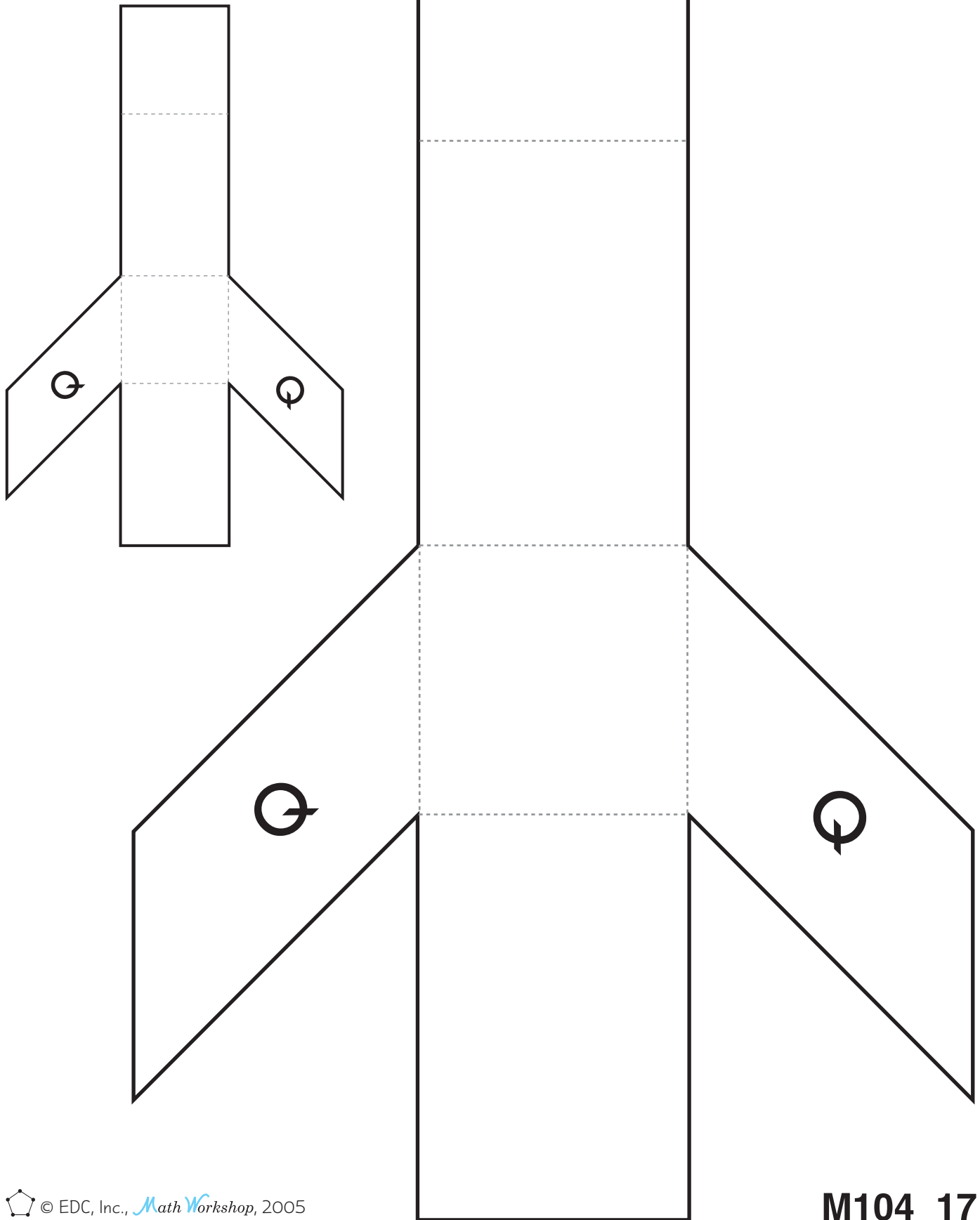
NET O: Cut along the heavy lines. Fold along the light dotted lines.



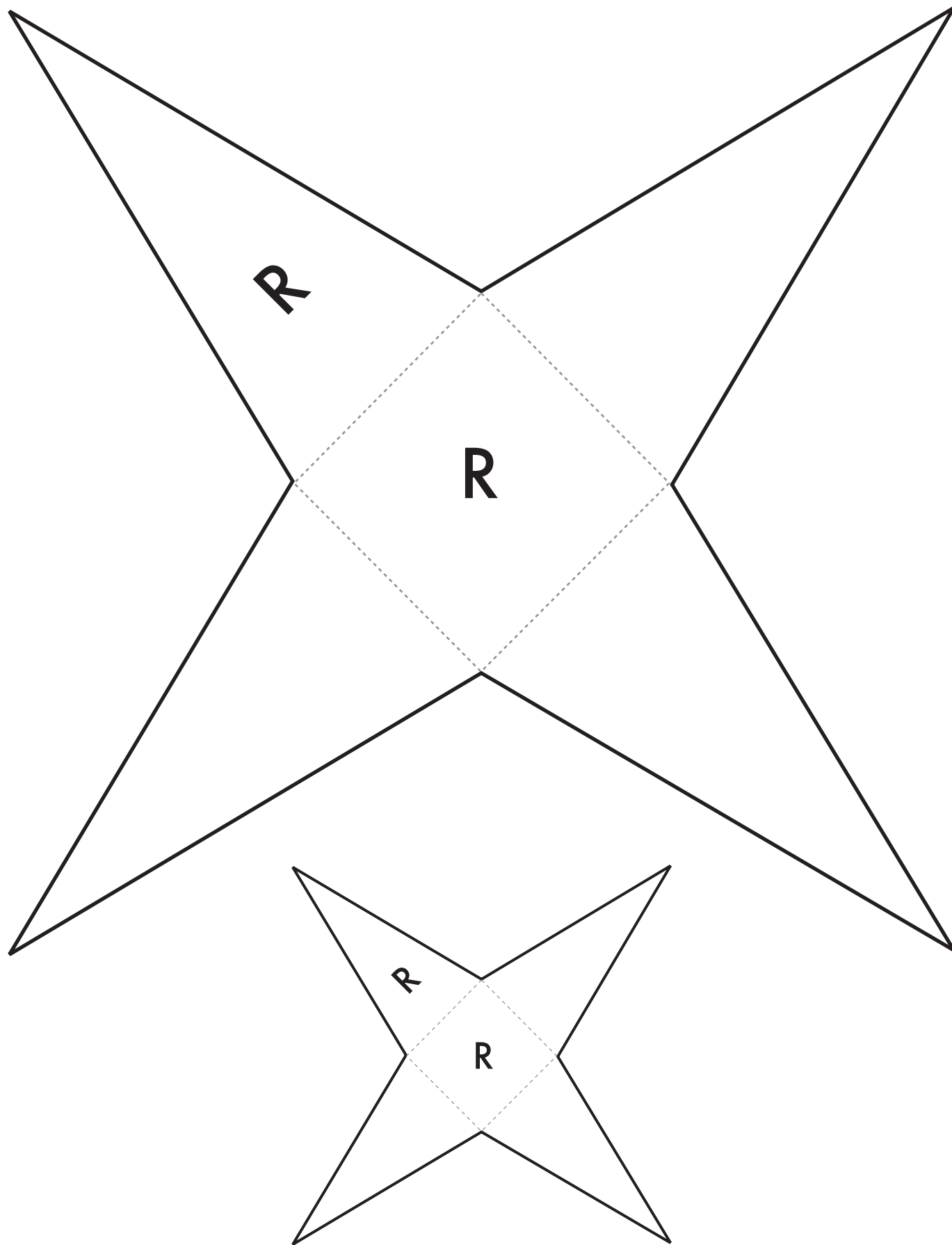
NET P: Cut along the heavy lines. Fold along the light dotted lines.



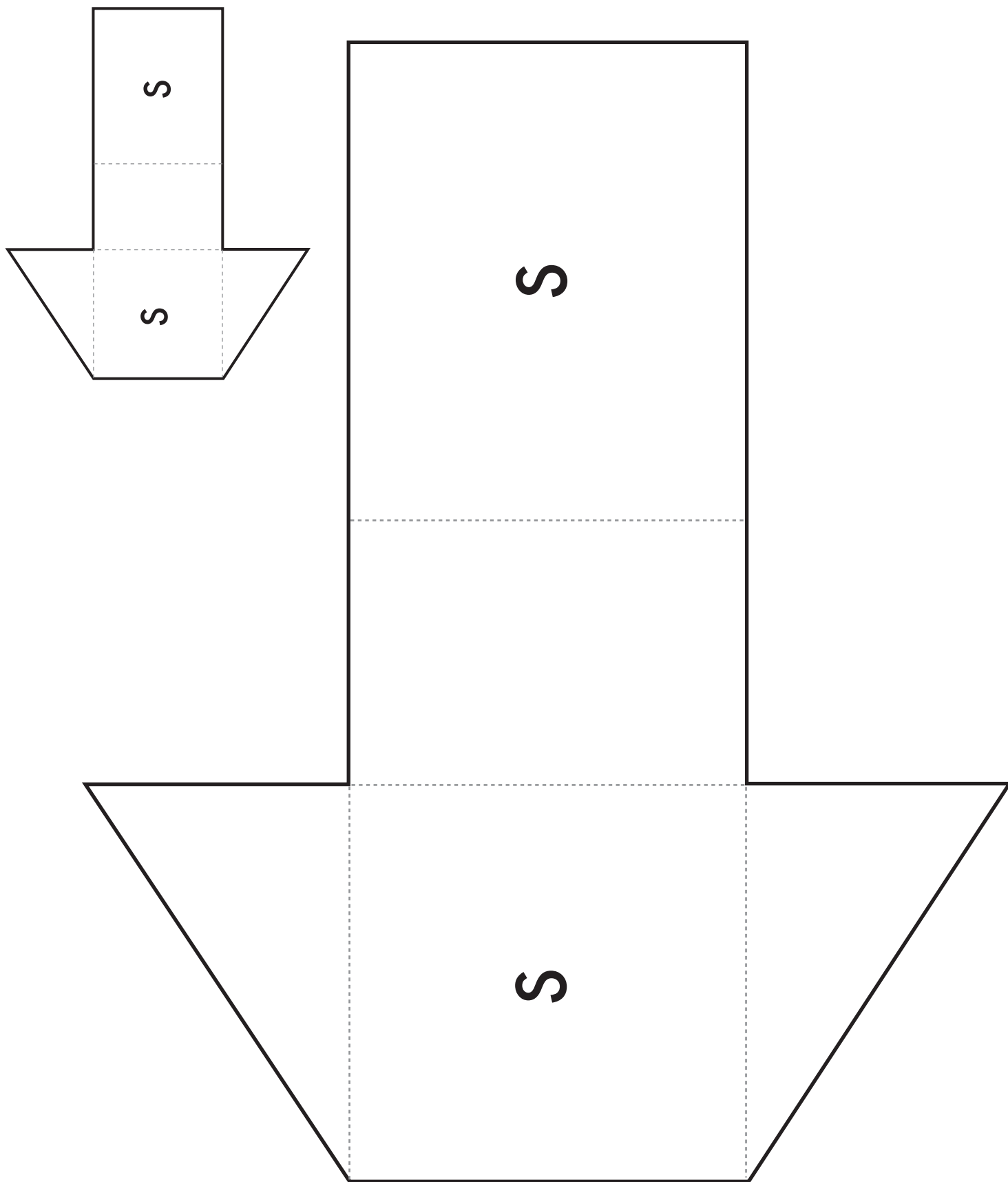
NET Q: Cut along the heavy lines. Fold along the light dotted lines.



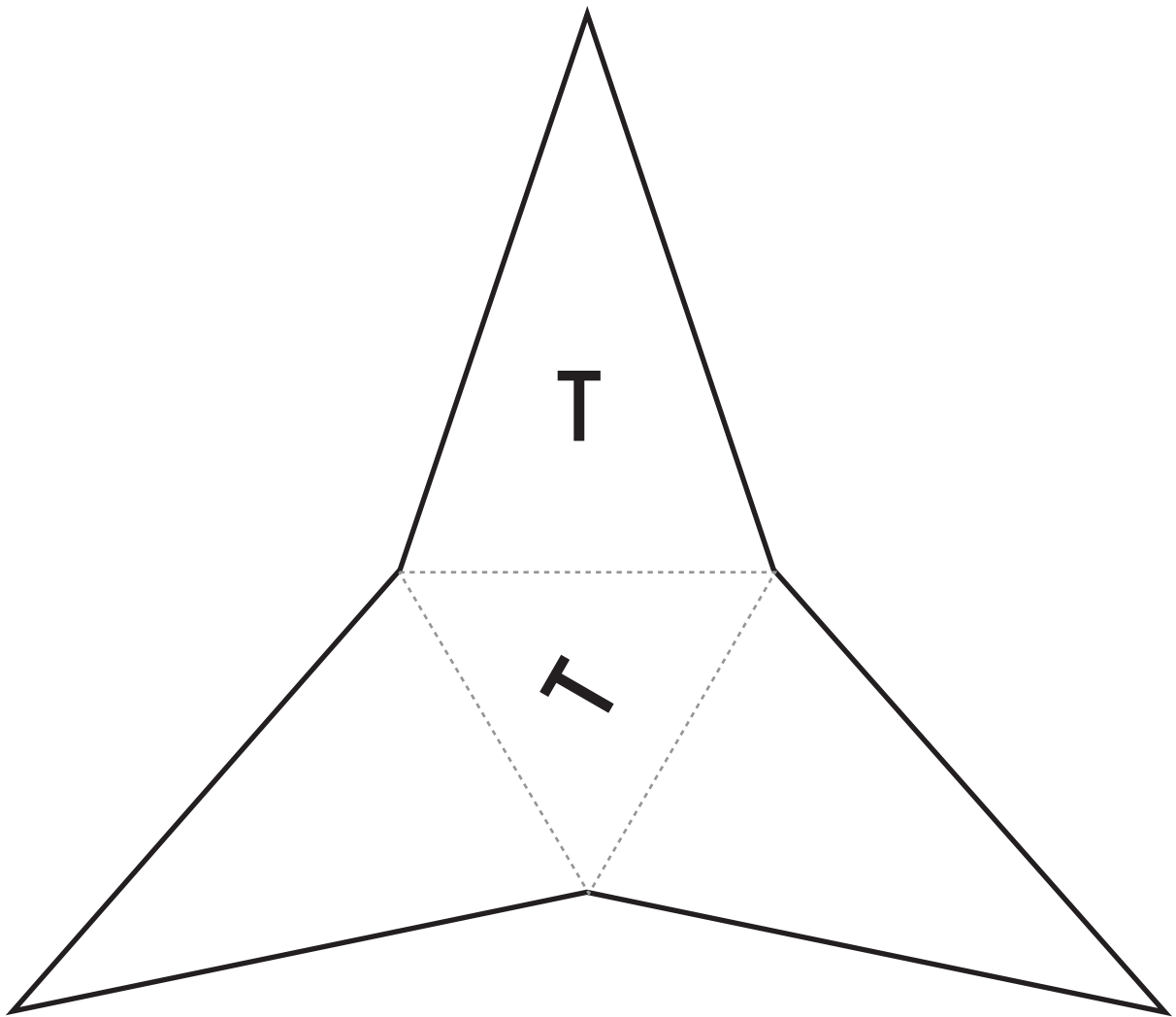
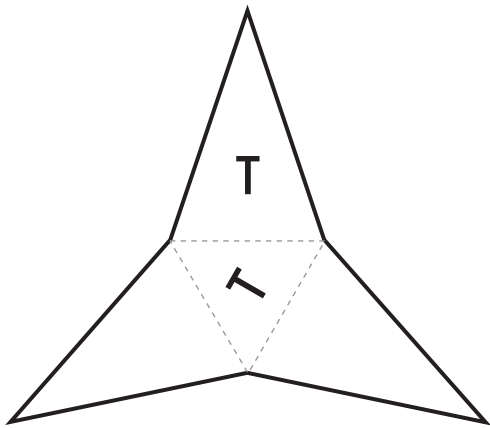
NET R: Cut along the heavy lines. Fold along the light dotted lines.



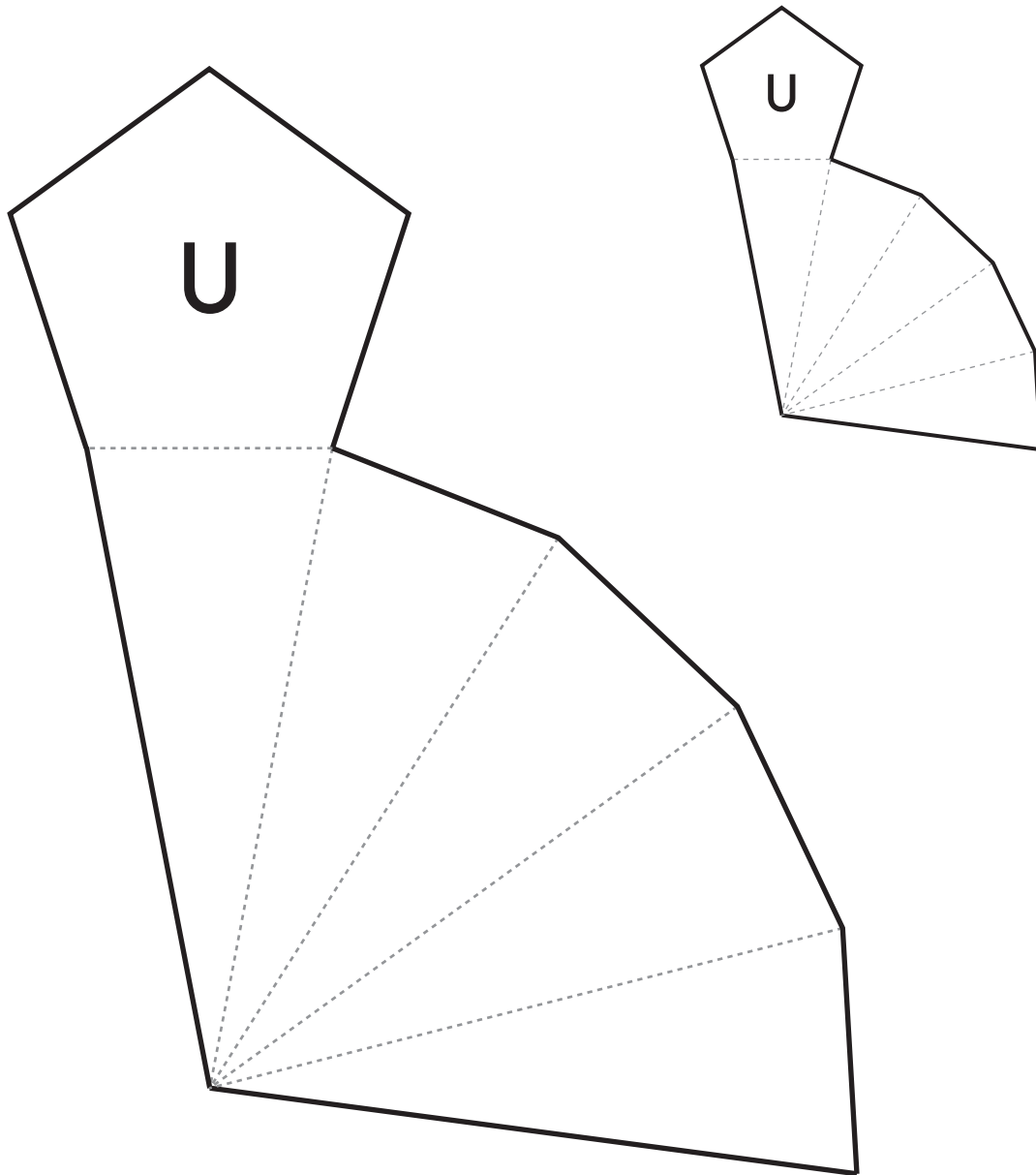
NET S: Cut along the heavy lines. Fold along the light dotted lines.



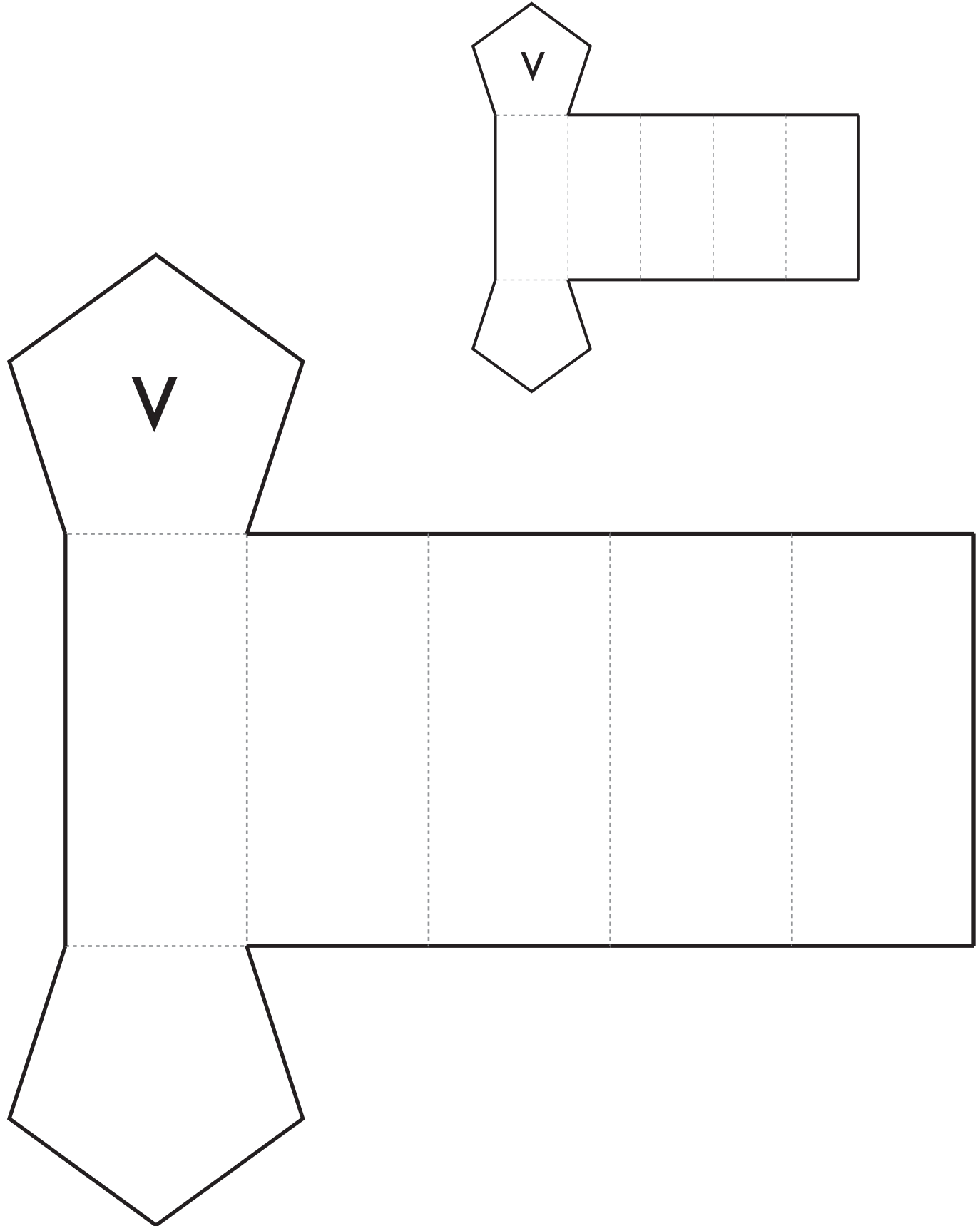
NET T: Cut along the heavy lines. Fold along the light dotted lines.



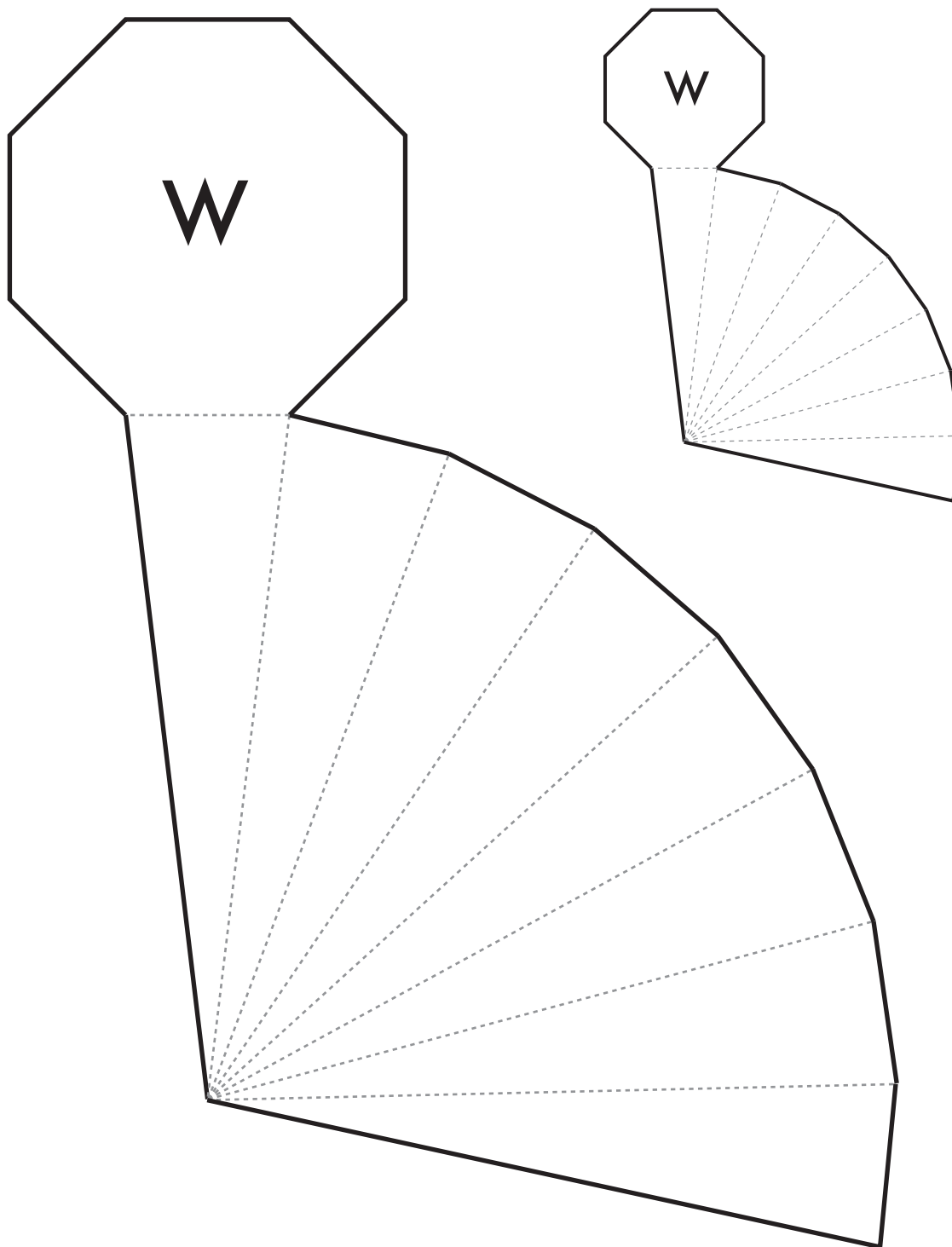
NET U: Cut along the heavy lines. Fold along the light dotted lines.



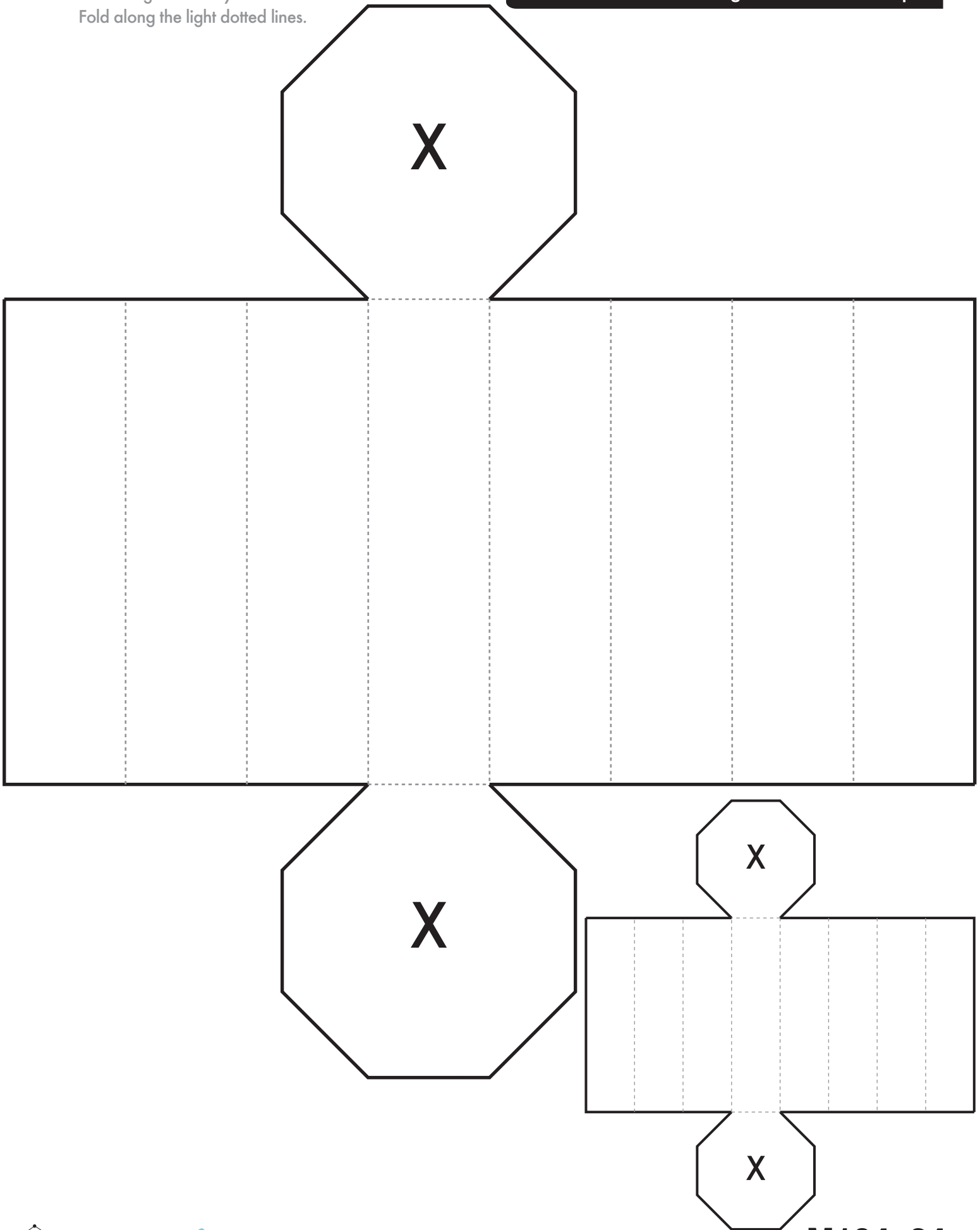
NET V: Cut along the heavy lines. Fold along the light dotted lines.



NET W: Cut along the heavy lines. Fold along the light dotted lines.



NET X: Cut along the heavy lines.
Fold along the light dotted lines.



NET Y: Cut along the heavy lines.
Fold along the light
dotted lines.

